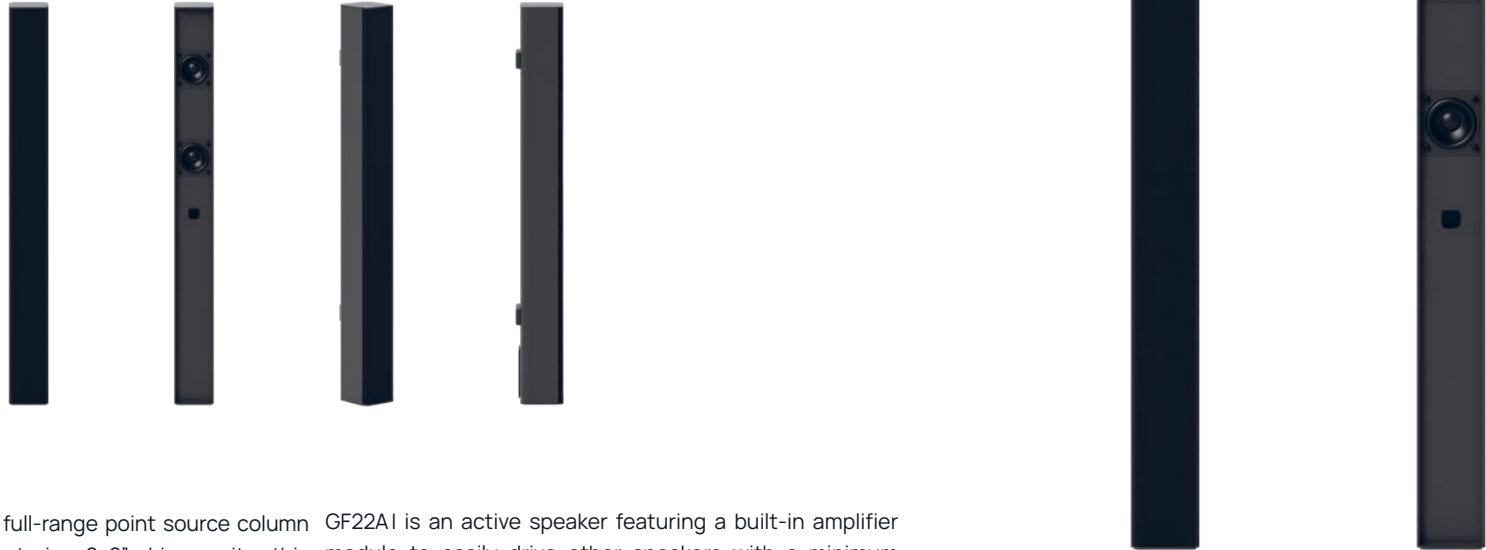


GF22I - GF22AI

2x2" point source speaker - passive and active



GF22I is the ultra-compact full-range point source column speaker from GF family. Featuring 2x2" driver units, this speaker delivers exceptional audio quality, particularly in the bass range, thanks to its built-in bass reflex technology.

GF22I is equipped with an Euroblock connector that features 2 additional pins for speaker relaunch, making it effortless to connect GF22I to other speakers in "daisy chain".

This not only simplifies the integration process but also provides flexibility in expanding any audio setup.

GF22AI is an active speaker featuring a built-in amplifier module to easily drive other speakers with a minimum load of 4Ω, equipped with 2x Phoenix connectors (4-pin Euroblock) with a balanced line input, a mute contact and an auto ON-OFF switch with selectable thresholds.

With GF22I, you can expect precise and focused reproduction in a compact and powerful design, along with the added convenience of easy connectivity.

GF22I comes in black (GF22I) and GF2W - white.

Wall mount L-brackets (included in the box)

GF221 - GF22A1 comes with 2x practicals on-wall mounting brackets with dedicated screws included, to provide different angles for fixed installations.

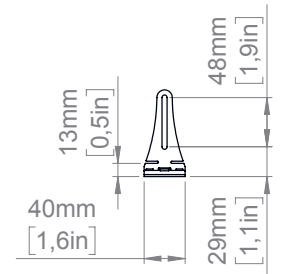
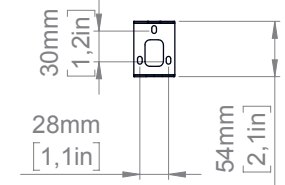
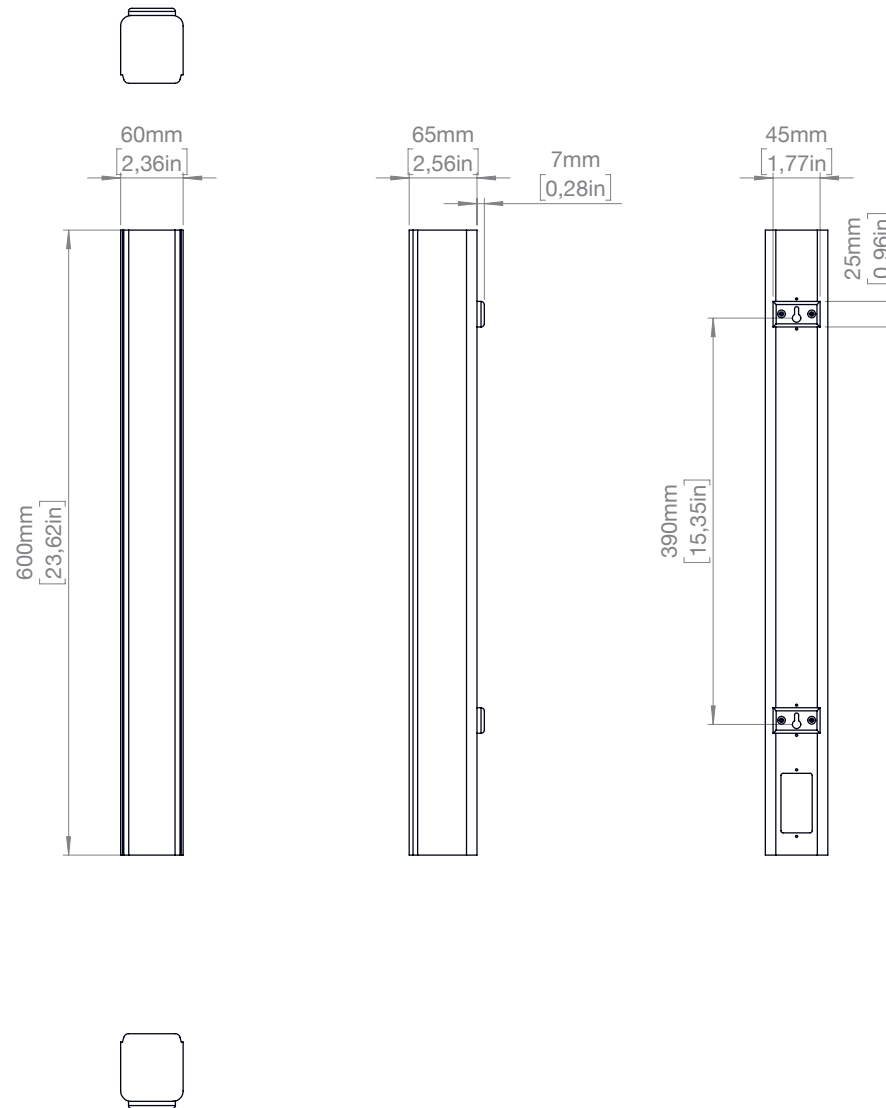


G-IPCAP1 accessories (not included)

G-IPCAP1 is an IP sealing protection cap to be applied to the rear panel of the speaker to protect the connectors from water, salt and chlorine.



Mechanical Drawings



GF22

Technical specifications
Type Passive point source loudspeaker
Transducer 2 x 2" ferrite magnet woofer
Frequency Response ¹ 90 Hz - 20 kHz (-6dB)¹
Max SPL ² 108 dB Peak²
Power Handling 50 W
Coverage V.90° H.90°
Connectors 4PIN Euroblock with speaker relaunch, Phoenix 1,5/4-ST-3,81 compatible
Nominal Impedance 16Ω
IP Rating IP54
Handling & Finishes
Dimensions (WxLxH) 60 x 590 x 72 mm (2.36 x 23.22 x 2.83 in)
Weight 1,3 kg (2.87 lb)
Material ABS
Color Black - White (GF22W)

¹ With dedicated preset

² Maximum SPL is calculated using a signal with crest factor 4 (12 dB) measured at 8 m then scaled at 1 m

GF22A

Technical specifications
Type Passive point source loudspeaker
Transducer 2 x 2" ferrite magnet woofer
Frequency Response ¹ 90 Hz - 20 kHz (-6dB)
Max SPL ² 105 dB Peak
Coverage V.90° H.90°
Connectors 2x 4-pin euroblock - Phoenix 1,5/4-ST-3,81 compatible Balanced line in Mute Contact Power out 24V DC IN (power supply not included)
Controllers Auto ON/OFF with selectable threshold
Amp Module 1-channel Class D amplifier
Output Power 100W @ 2Ω (24V power)
Power Consumption 30W Power Load 1/8 Max Power
Protections Thermal Protections (Power-Limiting - Thermal Shutdown) Short - circuit/overload output protections
Operating Range 12-24 V DC
IP Rating IP54 (IP55 requires G-IPCAP2 accessory)
Handling & Finishes
Dimensions (WxLxH) 60 x 590 x 72 mm (2.36 x 23.22 x 2.83 in)
Weight 1,3 kg (2.87 lb)
Material ABS
Color Black - White (GF22W)

¹ With dedicated preset

² Maximum SPL is calculated using a signal with crest factor 4 (12 dB) measured at 8 m then scaled at 1 m